

PLUMBERS INSTALLATION INSTRUCTIONS

Important Information

- * In-wall body kit & Trim kits are supplied in separate boxes. For Trim kit installation, follow the instructions supplied with the suitable Trim kit.
- * Brazed connections should NOT be made directly onto the mixer, as excessive heat will cause permanent damage.
- * All pipework must be thoroughly flushed prior to installation.
- * Sealant/ waterproofing materials used to seal the wall penetration and lining board must not interfere with the removal of the protective sleeve (3) and installation of the trim components.

Installation (Fig. 1&2)

- 1) Fit mixer body assembly (1) onto a suitable mounting plate or noggin in the wall and secure using screws through the holes in its base. When facing the mixer, the connections should be as follows (Fig.2):
Hot water inlet connection 'H' below mixer cartridge.
Cold water inlet connection 'C' to the right of mixer cartridge.
Mixed water outlet connection, to the left of mixer cartridge.
Check all connections for leaks and the tap for correct operation.

Important :

- * The front face of the mounting plate or noggin must be parallel to the finished wall/tile face.
 - * The centreline through the wall mixer (1) & outlet spigot (2) must be horizontal to ensure that the cover plate from the trim kit is square and aligns with the finished wall tile joints.
 - * To avoid damaging the decorative finish, do not remove the plastic protective sleeves (2) & (3) until installing the trim kit & wall outlet.
- 2) Seal the wall penetration between the lining board and the mixer body (1) and outlet spigot (2) then apply a waterproof membrane to the manufacturers specifications. **Important:** Sealant/waterproofing materials must remain clear of the protective sleeve (2) and the surface it protects to allow for removal of the sleeve and installation of the trim components.

Important: Waterproofing materials must not contact this surface.

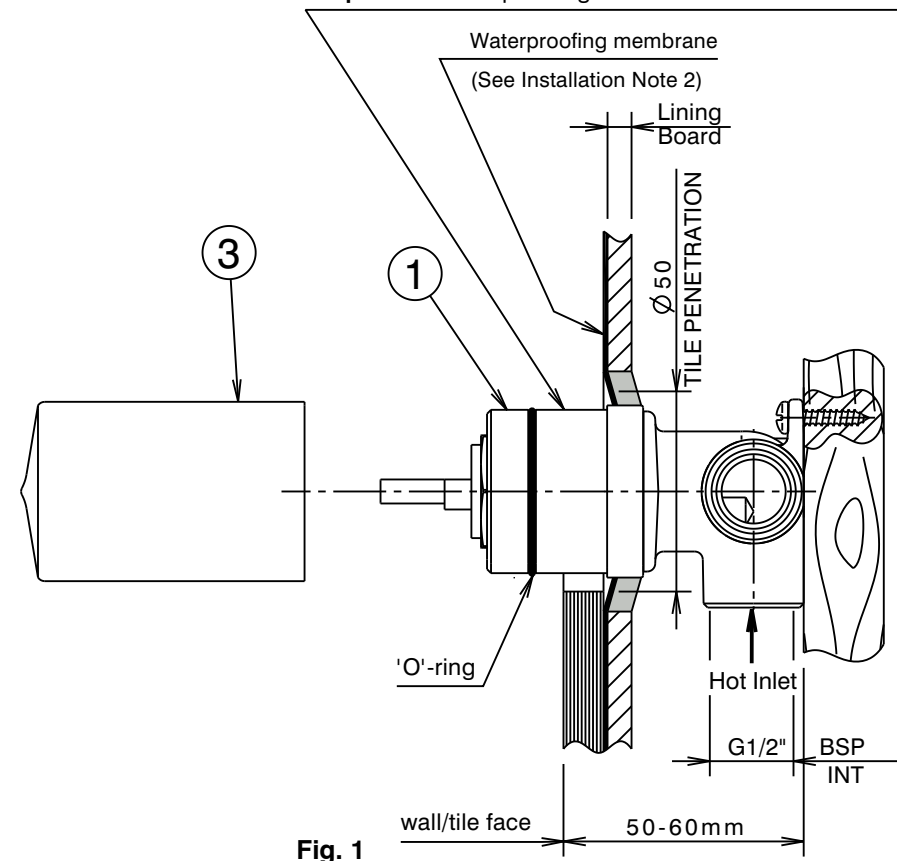


Fig. 1

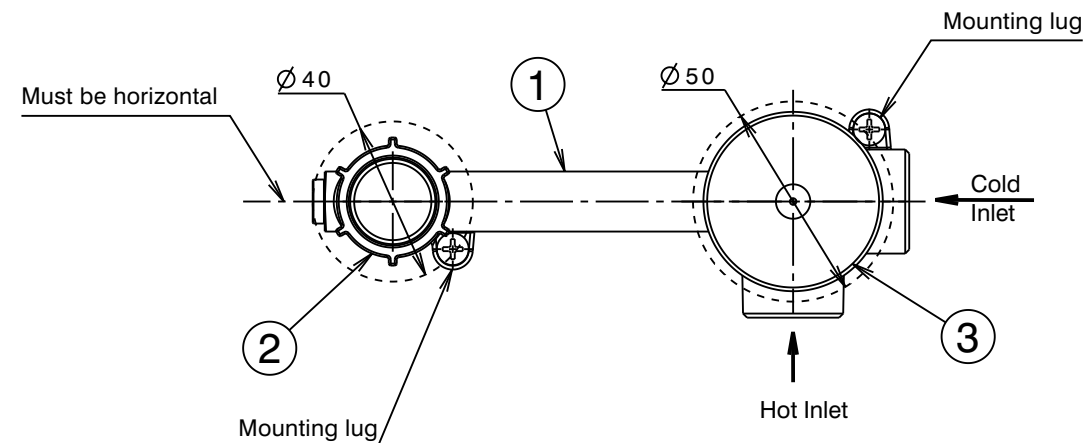


Fig. 2

IMPORTANT	
<u>Pressure & Temperature Requirements.</u>	
•	Hot and cold water inlet pressures should be equal.
•	Static inlet pressure range : 150 -1000 kPa New Regulation : -500 kPa maximum static pressure at any outlet within a building. (Ref. AS/NZS 3500.1)
•	Maximum hot water temperature : 80°C.
<u>Installation Requirements.</u>	
•	The installing plumber is responsible for waterproofing all penetrations for Taps in Shower areas at installation by a proprietary flange system or a sealant. (Ref AS3740)