

VITREOUS CHINA LIANO CLEANFLUSH WALL HUNG PAN

PLUMBERS INSTALLATION INSTRUCTIONS

PLEASE READ CAREFULLY BEFORE INSTALLATION

INSTALLATION PROCEDURE FOR LIANO CLEANFLUSH WALL HUNG PAN

NOTE - Installation must be on a non-compressible wall material.

- 1 - Install Caroma bracket and pipework to specified dimensions, as detailed in **Fig. 3**.
- 2- Ensure the contact area on the wall for fitting the pan is flat and true. Check with straight edge before installation.
- 3- Set the length of the fixing studs 38mm from the finished wall surface, as detailed in **Fig. 1**.
- 4- Set the inlet pipe to 29mm from the finished wall, as detailed in **Fig. 4**.
- 5- Fit keeseal onto the inlet pipe.
- 6- Remove paper cover from gasket and stick gasket to the back of the pan ensuring it is centralised.
- 7- Fit rubber gasket into position.
- 8- Fix the mounting sleeves onto fixing studs so that 10mm of thread is exposed in front of the gasket, as detailed in **Fig. 1**.
- 9- Make sure the fixing notch in the sleeves are facing outwards towards the fixing holes in the pan.
- 10- Fit the plastic fixing bushes into the holes provided with the grub screw facing the fixing holes in the side of the pan, as detailed in **Fig. 2**.
- 11- Smear pan collar and inlet keeseal with soap solution for push on installation of pan.
- 12- Install the pan onto the fixing sleeves ensuring engagement onto the inlet pipe and pan collar and hold in position.
- 13- Insert fixing key through the fixing holes in the side of the pan and tighten the grub screws to a maximum torque 7Nm[62 lbf-in] on both sides to hold the pan onto the bracket.
- 14- Fit toilet seat.
- 15- For optimum installation, it is recommended that the joint between the pan and finished wall be caulked with acetic cured silicone sealant.

Installation must be in accordance with AS/NZS 3500.1 and AS/NZS 3500.2

INCLUDED :

- D.990 Fixing kit (1)
- Rubber Gasket (1)
- 50mm Keeseal (1)

Fixing Detail

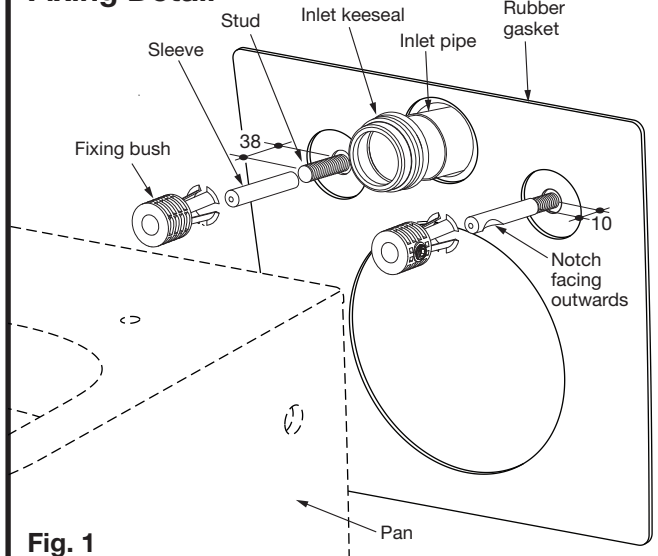


Fig. 1

Fixing Detail

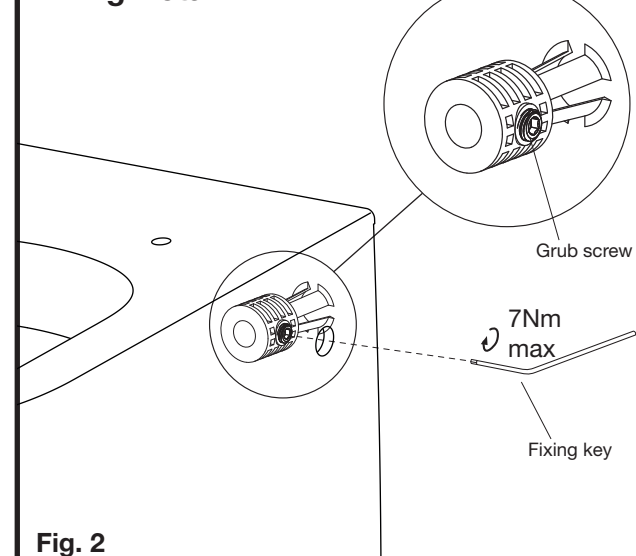


Fig. 2

Set-Out Dimension for Liano Pan

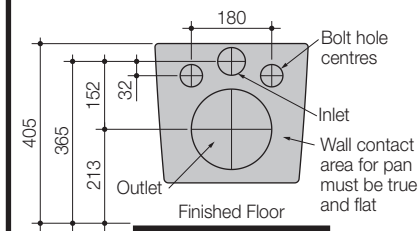


Fig. 3

Inlet Detail

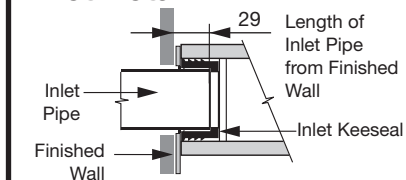


Fig. 4

Installation Detail

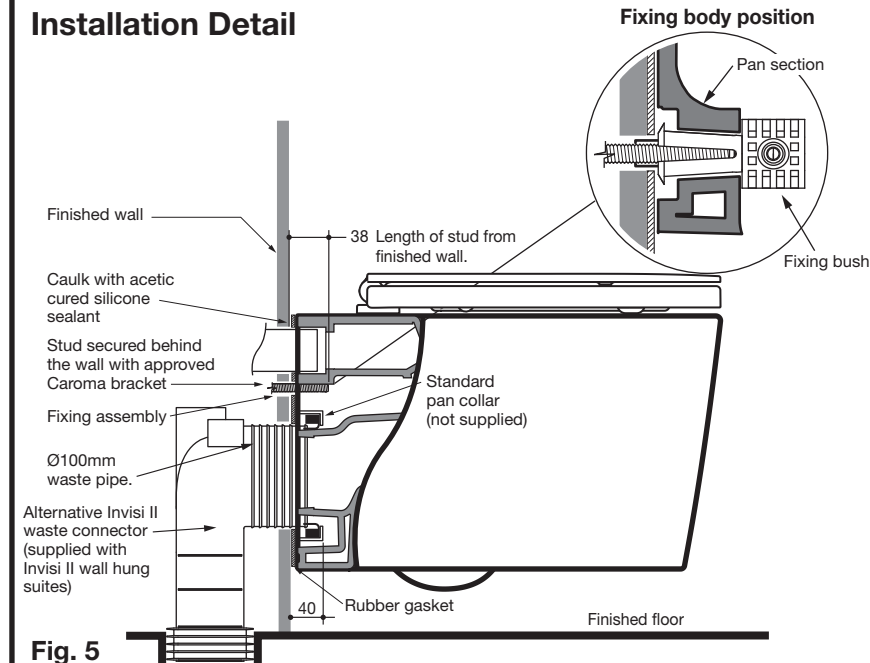


Fig. 5